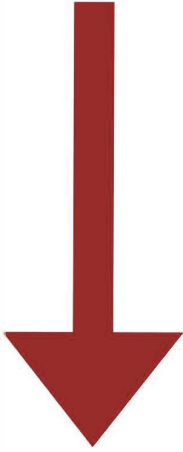


PLEASE MAKE SURE
SAMPLE GOES ALL THE WAY
DOWN TO THE BASE



TO SEAL

TAPE HERE

Website: tracellements.health

HTMA Laboratory Submittal Form.

Special Note: Every sample must have a completed the required weight.

Unavailable, one full teaspoon should be approximately 125 milligrams (0.125 grams). If a hair weight scale is **Amount:** The requested weight for a hair specimen is discard the excess.

proximal portion (the closest 1.5 inches to the root) and length of the collected hair to 1.5 inches or less. Keep the cut the hair as close to the scalp as possible. Keep the **Length:** Use stainless steel scissors or thinning shears to containents between washing and collection.

Take precautions for those exposed to external Ensure hair is free of gels, oils, and hair creams.

Untreated hair can usually be found beneath the nape. treated, wait for new virgin growth before collecting.

permed, dyed, or bleached. If all hair has been chemically **Sample Preparation:** Collect untreated hair that is not

Quality, Integrity, Commitment

ELEMENTS

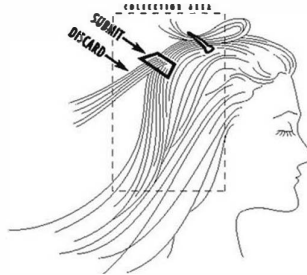
TRACE

LAB NO. (RETEST ONLY): _____

PATIENT NAME _____

SHAMPOO: _____

ACCOUNT NO.: 6663 (For internal use only)



Location: Take small portions of each sample from at least 4 to 5 different areas of the scalp. Collect samples from the nape of the neck, posterior vertex, and posterior temporal regions. Scalp hair is the preferred choice for analysis. Other body hair, like pubic hair, should only be used if scalp hair is unavailable. Do not mix head hair from other areas of the body.

Fold 5

Fold 4

Fold 3

Fold 2

Fold 1